A large, semi-transparent image of a globe with a wireframe grid overlaying the continents. The globe is centered on the Americas. A solid red vertical bar is on the left side of the image.

iPassConnect™ 2.35 for PocketPC 2003® User Guide

Version: 1.0, June 2004

Corporate Headquarters

iPass Inc.

3800 Bridge Parkway

Redwood Shores, CA 94065 USA

<http://www.ipass.com>

T: +1 650.232.4100

F: +1 650.232.0227

TABLE OF CONTENTS

<i>iPassConnect™ 2.35 for PocketPC 2003® User Guide</i>	3
Introduction	3
System Requirements	3
Device Requirements.....	3
Setup	4
Installation Instructions	4
Launching iPassConnect.....	4
Basic Configuration	4
Before Connecting.....	4
Setting your User Information	4
Setting the Dial Properties (Dial-Up Users Only)	4
Configuring your Modem (Dial-up Users only)	5
Connecting to the iPass Network	6
For Modem, ISDN or PHS Connections.....	6
For Wired or Wireless Broadband Connections.....	6
Disconnecting from the iPass Network.....	6
Advanced Features	7
Smart Redial.....	7
Busy Number Redial	7
Post-Launch Applications	7
VPN Integration and iPassConnect.....	8
Bookmarks	8
Software and Phonebook Updates	9
Uninstalling the iPassConnect Client.....	9

iPassConnect™ 2.35 for PocketPC 2003® User Guide

FOR PDAS USING MICROSOFT® POCKET PC 2003

Introduction

The iPassConnect™ client is a simple, easy-to-use PDA application that allows remote users to connect to the Internet through iPass' global network of providers. It has a point-and-tap interface for connecting to iPass local access points, and will operate on any device that uses the Microsoft® PocketPC 2003.

This guide is an introduction to use of the iPassConnect client software. It provides users with valuable information on how to install, configure and use the client. In this guide, you will find information on system requirements, installation instructions, iPassConnect features, and basic and advanced configuration instructions.

System Requirements

Device Requirements

To support the iPassConnect client software, your PDA must meet the following minimum requirements:

- The Microsoft Pocket PC 2003 operating system
- At least 1.5 MB free disk space
- At least one connectivity device, depending on your connection type:
 - A modem for a dial-up connection
 - An Ethernet card for a wired broadband connection
 - An 802.11b wireless card for a wireless broadband connection.

Setup

Installation Instructions

Installing the iPassConnect client is simple. The installation file for installing the client software can be found on your company intranet, or on your service provider's Web site.

Before the installation process, make sure that:

- Microsoft ActiveSync 3.5 or 3.6 is installed on your PC.
- Your PDA cradle is connected to your PC.

You should then dock your PDA, and establish a partnership between the PDA and PC.

To install iPassConnect on your PDA:

1. Download the iPassConnect installation file from your company intranet or service provider Web site to your PC.
2. On your PC, double-click the file to begin installation.
3. Proceed through the installation wizard.
4. Review the End User License Agreement. You must accept the Agreement in order to install the software.
5. Your PC will communicate with your PDA. On the **Installing Applications** dialog box, under "**Install iPassConnect using the default application install history?**" click **Yes**.
6. After installing the client on your PC, check your PDA screen to see if any additional steps need to be taken. Otherwise, the installation process is now complete, and you will see an iPassConnect icon on your PDA's Start menu. You are now ready to connect.

Launching iPassConnect

To launch the iPassConnect client, on the **Start** menu, tap **iPassConnect**.

Basic Configuration

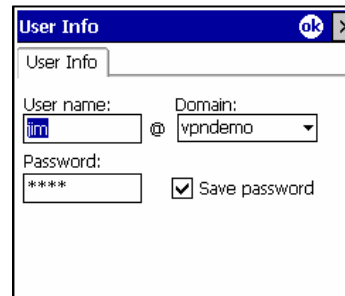
Before Connecting

Before connecting for the first time, you should make sure that your user information has been entered correctly. If you are a dial-up user (modem, ISDN or PHS), you should also make sure that your dial properties are set and your modem is correctly configured.

Setting your User Information

To set your user name, domain name and password:

1. On the **Options** menu, tap **User Info**.
2. Enter your user name and domain (for example, jim@company.com)
3. Enter your password.
4. If you want iPassConnect to store your password information, select **Save Password**.
5. Tap **OK**.



Setting the Dial Properties (Dial-Up Users Only)

If you're a dial-up user (which includes modem, ISDN and PHS), it's very important to set your dial properties correctly.

To set your dial properties:

1. On either the **Modem**, **ISDN** or **PHS** tabs, double-tap **Dial Properties**.
2. Under **General**, in **Dial Prefix**, enter any dial prefix you may need, such as 9 to get an outside line.

3. If you wish to disable Call Waiting, in **Disable Call Waiting**, select the characters needed from the drop-down list.
4. In **Dial Using**, select whether your phone system uses tone or pulse dialing.
5. Under **Dialing From Location**:
 - If this will be the same location as the one you are connecting to, select **Same Location**.
 - Otherwise, select the location from which you are dialing, including country and area code. Then select an area rule that reflects your local area's dialing rules (for example, dialing a 1 before the area code.)
6. The complete dial string, which reflects all of the dial properties you have set, appears at the bottom of the dialog box. If this is not correct, fix the properties as required for correct dialing from your location. If the dial string is correct, tap **OK**.

Configuring your Modem (Dial-up Users only)

If you're a dial-up user, you must make sure your modem is configured correctly.

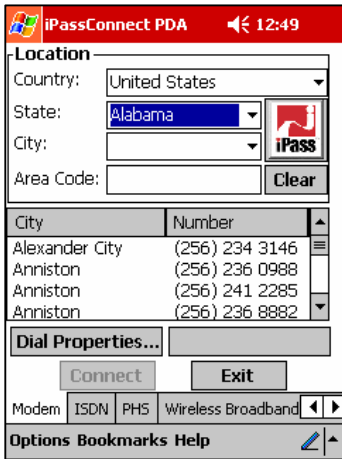
To configure your modem:

1. On the **Options** menu, select **Settings**.
2. Tap the **Dialup** tab.
3. Under **Device Settings**, select the modem device from the drop-down list.
4. Tap **Configure**.
5. On the **Port Settings** tab, enter your modem's configuration data, such as baud rate, data bits, parity, stop bits and flow control. We recommend you leave these values set to their defaults, or consult your modem's documentation for details.
6. On the **Call Options** tab, set any desired call options.
 - If you wish to set an interval for the client to cancel a call.
 - To disable the wait for a dial tone, deselect **Wait for dial tone before dialing**.
 - Enter any interval needed to wait for a credit card tone
 - Enter any extra dial-string modem commands.
7. Tap **OK**.

Connecting to the iPass Network

For Modem, ISDN or PHS Connections

To connect using a dial-up connection such as modem, ISDN or PHS:



1. Tap the appropriate access type tab for your desired connection. (For example, tap **Modem** to make a modem connection.)
2. **Search by Location:** Under **Location**, select the filter criteria you will use from the drop-down lists. Each criterion will narrow your search for an access point to a more specific location, and display the search results in a list. For example, to see all the access points in a country, select the country from the **Country** drop-down list. To narrow the search to a specific state in that country, select the state from the **State** drop down list.
3. Alternately, if you are dialing a US access point, in the **Area Code** text box, enter the area code where you are or want to dial from. All of the available access points in that area code will be displayed.
4. From the list of access points, select the access point to dial. You can sort the list of access points by location or number, by simply tapping the appropriate table header.
5. The characters that appear in the preview box constitute the dial string that will be used to connect. If the dial string is not correct (for example, the area code is not needed, or you need a 9 to get an outside line), you may need to set the Dial Properties. See page 4 for more information on setting Dial Properties.
6. Tap **Connect**.

For Wired or Wireless Broadband Connections

To connect using a wired or wireless broadband connection:



1. Tap the appropriate access tab.
2. **Search by Location:** Under **Location**, select the filter criteria you will use from the drop-down lists. Each filter will narrow your search for an access point to a more specific location, and display the search results in a list. For example, to see all the access points in a country, select the country from the Country drop-down list.
3. To narrow the search to a specific state in that country, select the state from the **State** drop down list.
4. Select the specific access point from which you want to connect.
5. Tap **Connect**.

Disconnecting from the iPass Network

To disconnect from the iPass network:

1. If you're connected, tap **Disconnect**. The main iPassConnect window appears.
2. a. Tap **Exit** to close the program, **OR**,
b. Choose another access point and connect again.

Advanced Features

Your iPassConnect client is equipped with a number of advanced features that make the application even easier.

Smart Redial

By using the Smart Redial feature with dial-up connections, your client will automatically continue dialing all access points within the same city until a successful connection is made.

To turn on Smart Redial:

1. On the **Options** menu, tap **Settings**.
2. Tap the **Dialup** tab.
3. Under **Redial Settings**, select **Smart Redial**.
4. Tap **OK**.

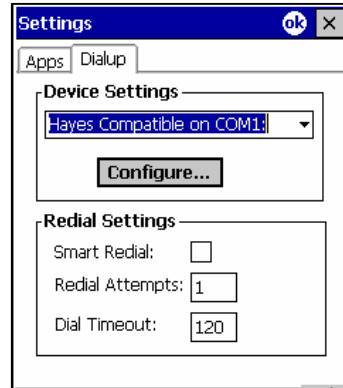
Busy Number Redial

The Busy Number Redial feature, used for dial-up connections, allows you to configure your client to retry a busy access point if a connection attempt fails. This feature is useful when using a bookmarked access point, or when roaming in areas where there are few access points and heavy Internet traffic.

To configure your client to redial a busy access point:

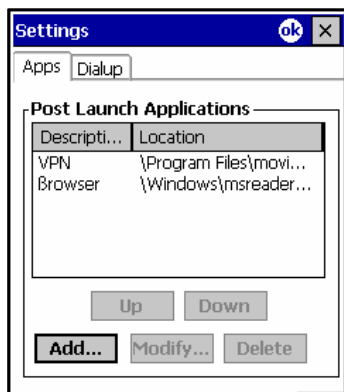
1. On the **Options** menu, tap **Settings**.
2. Tap the **Dialup** tab.
3. Under **Redial Settings**, in **Redial Attempts**, enter the number of times the client should try to redial the busy number.
4. In **Dial Timeout**, enter the interval in seconds between each redial attempt.
5. Tap **OK**.

The Busy Number Redial feature may be incompatible with the Smart Redial feature, which will cause the client to roll over to the next access point upon a failed connection attempt. Whenever possible, you should give preference to the Smart Redial feature rather than the Busy Number Redial for greater reliability.



Post-Launch Applications

The Post Launch Applications feature allows you to configure programs to run after connection. You may use this feature to launch a Web browser, connect to your corporate network using a VPN, or to launch various other programs.



To configure the iPassConnect client to launch other programs:

1. On the **Options** menu, tap **Settings**.
2. Tap the **Apps** tab.
3. Tap **Add**.
4. Tap **Browse** and browse to the location of the application you wish to launch after connecting, then tap **OK**.
5. In **Name**, enter the name of the application. (For example, VPN.)
6. Tap **OK**.

Note that the **Post Launch Applications** window displays, from top to bottom, the order in which each application will run. You can change this order if desired.

To change the order in which your applications will run:

1. On the **Options** menu, tap **Settings**.

2. Tap the **Apps** tab.
3. Under **Post Launch Applications**, select an application and tap **Up** to move it up in the list, or **Down** to move it down in the list.
4. Tap **OK**.

To modify a post-launch application:

1. On the **Options** menu, tap **Settings**.
2. Tap the **Apps** tab.
3. Under **Post Launch Applications**, select an application and tap **Modify**.
4. **On the Add/Modify Application dialog**, enter a new name for the application or **browse to a new location**.
5. Tap **OK**.

To delete a post-launch application:

1. On the **Options** menu, tap **Settings**.
2. Tap the **Apps** tab.
3. Under **Post Launch Applications**, select the application and tap **Delete**.
4. Tap **OK**.

VPN Integration and iPassConnect

A program that connects you to your corporate network is called a virtual private network (VPN). You can run your VPN as a post-launch action by selecting it as a program to run after connection. However, depending on the configuration of your VPN, you may or may not have to enter another user name and password in addition to the one used to connect to the iPass network. Contact your Help Desk for more information.

Bookmarks

The **Bookmark** menu allows you to conveniently save and re-use the connection information for access points you use most frequently.

Bookmarks for each connection type are only displayed when you have selected the associated access type tab. For example, when you have selected the Modem tab, only the bookmarks for modem access points will appear in the Bookmarks list.

To bookmark an access point you use frequently:

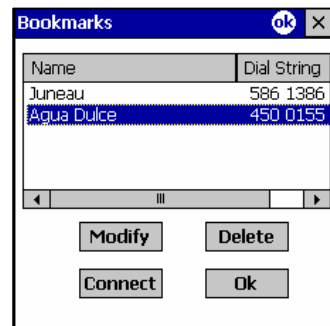
1. Select the access point as you would normally, as described above.
2. On the **Bookmarks** menu, tap **Add**.
3. The bookmark will be shown with a default name. If you want to keep the default name, tap **OK**.
4. If you want to assign the bookmark a new name, enter the new name and tap **OK**.

To connect using an existing bookmark:

1. On the **Bookmarks** menu, tap **Select**.
2. From the list of Bookmarks, select the access point you wish to use.
3. Tap **Connect**.

To modify a bookmark:

1. On the **Bookmarks** menu, tap **Select**.
2. From the list of Bookmarks, select the bookmark you wish to modify.
3. Under **Name**, enter a new name for the selected bookmark.
4. Tap **OK**.



To delete a bookmark:

1. On the **Bookmarks** menu, tap **Select**.
2. From the list of Bookmarks, select the bookmark you wish to delete.
3. Tap **Delete**.
4. Tap **OK**.

Bookmarks can become obsolete when the Phonebook is updated. If you fail to connect to a bookmark, that access point might have changed or been removed. Check your current Phonebook to see if the access point is still valid.

Software and Phonebook Updates

Both configuration and Phonebook updates are applied to the PDA client when you connect to the iPass network. Software updates are not applied this way, but must instead be installed through the ActiveSync process between your PC and PDA.

Uninstalling the iPassConnect Client

To uninstall the iPassConnect client:

1. Dock your PDA in its cradle.
2. On your PC or laptop, on the **Start** menu, choose **Control Panel** → **Add/Remove Programs**.
3. Select iPassConnect. This process will remove iPassConnect from your PC and your PDA.

About iPass

iPass Inc. delivers enterprises simple, secure and manageable connectivity services for mobile workers as they move between office, home, and remote locations. iPass combines its global network of dial-up, Ethernet and the world's largest Wi-Fi footprint with support for campus wireless LANs and home broadband connections to deliver a unified and comprehensive solution. The award-winning iPassConnect™ user interface, centralized management, leading security features and powerful policy enforcement have made iPass services the choice of hundreds of Global 2000 corporations including General Motors, Dow Corning and Underwriters Laboratories. Founded in 1996, iPass is headquartered in Redwood Shores, California, with offices throughout North America, Europe and Asia Pacific

Corporate Headquarters
iPass Inc.
3800 Bridge Parkway
Redwood Shores, CA 94065
United States
Tel: +1 650.232.4100
Fax: +1 650.232.4111
www.ipass.com

Australia
iPass Holdings Pty Ltd.
Level 1, 80 Waterloo Road
Macquarie Park, NSW 2113

Australia
Tel: +612 8876.8700
Fax: +612 8876 8777

United Kingdom
iPass (U.K.) Limited
139 Piccadilly
London W1J 7NU
United Kingdom
Tel: +44 20.7317.4400
Fax: +44 20.7317.4450

Hong Kong
iPass Asia Pte Ltd.
3802A, Lippo Centre
Tower Two
89 Queensway, Admiralty
Hong Kong
Tel: +852.2918.8268
Fax: +852.2918.8278

Germany
iPass EMEA
Region D/A/CH
Wiener Platz 7
D-81667 München
Germany
Tel: +49 89 44 142 - 100
Fax: +49 89 44 142 - 111
infoDach@ipass.com

Netherlands
iPass EMEA
Kingsfordweg 151
1043 GR Amsterdam
Netherlands
Tel: +31 20 491 77 48
Fax: +31 20 491 9090
sales-emea@ipass.com

Sweden
iPass EMEA
Frösundaviks Allé 15
Sölna
Stockholm 16970
Sweden
Tel: + 46 (8) 590 041 39
Fax: + 46 (8) 590 041 10
sales-emea@ipass.com

Belgium
Pegasus Park
Pegauslaan 5
1831 Diegem
Belgium
Tel: +32 2 709 29 40
Fax: +32 2 709 22 22
sales-emea@ipass.com

Denmark
South Harbour
Sluseholmen 2-4
Copenhagen South 2450
Denmark
Tel: +45 36 94 45 65
Fax: +45 36 94 45 10
sales-emea@ipass.com

Japan
iPass Japan
Ginko Kyokai Building, 15th Floor
1-3-1 Marunouchi
Chiyoda-ku, Tokyo 100-0005
Japan
Tel: +81 3.3216.7266
Fax: +81 3.3216.7281

Singapore
iPass Asia Pte Ltd.
7 Temasek Boulevard
#23-02 Suntec Tower One
Singapore 038987
Tel: +65 6334.8783
Fax: +65 6337.033

Latin America
Tel: +1 650.232.4186
Fax: +1 650.232.0229
sales-sa@ipass.com